

PHASED CONSTRUCTION SEQUENCE
& FACILITY MODIFICATIONS
ODNR CHIEF'S ORDER #2014-183
WEAVERTOWN TRANSPORT LEASING, INC.
WTL PROCESSING FACILITY
GRANDVIEW TOWNSHIP, WASHINGTON COUNTY, OHIO

SUBMITTAL RECORD		
NO.	DATE	DESCRIPTION
REVISION RECORD		
NO.	DATE	DESCRIPTION

ENGINEER/SURVEY
CIVIL & ENVIRONMENTAL CONSULTANTS, INC.
8740 ORION PLACE, SUITE 100
COLUMBUS, OHIO 43240
REPAIRER: ROY A. STANLEY, PROJECT MANAGER
PHONE: 614-540-6633

DEVELOPER
WEAVERTOWN TRANSPORT LEASING, INC.
2 DORRINGTON ROAD
CARNEGIE, PENNSYLVANIA 15106
REPRESENTATIVE: DARYL HEISER, VICE PRESIDENT
PHONE: 724-746-4850

RECEIVED
OCT 02 2014
Division of Oil and Gas
Resources Management



SITE MAP

SCALE: 1"=200'

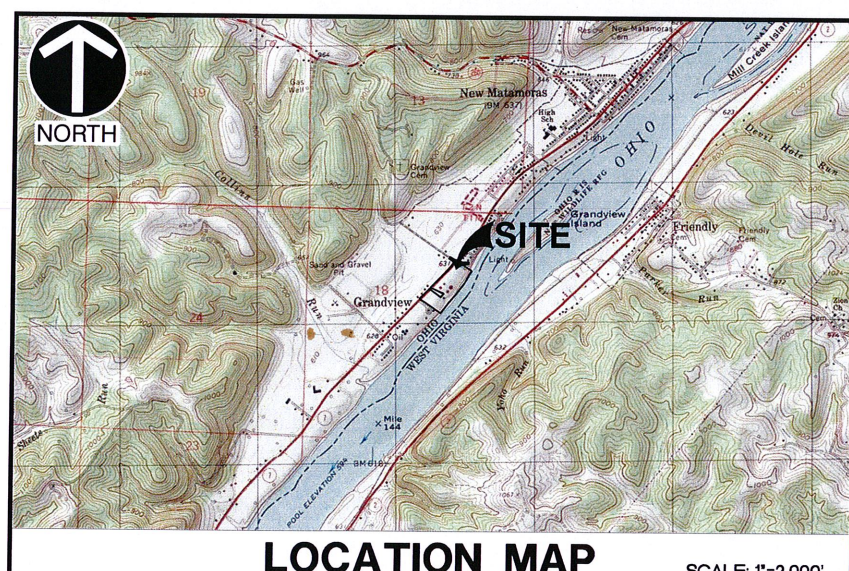
PREPARED FOR:

WEAVERTOWN
SERVICES

APPLICANT/OWNER/OPERATOR
WEAVERTOWN TRANSPORT LEASING, INC.
2 DORRINGTON ROAD
CARNEGIE, PENNSYLVANIA 15106

DRAWING INDEX		
SHEET NO.	DWG. DESC.	SHEET TITLE
1	1	TITLE SHEET
2	2	SITE ENVIRONS
3	3A	SITE LAYOUT PHASE 1
4	3B	SITE LAYOUT PHASE 2
5	3C	SITE LAYOUT PHASE 3
6	3D	SITE LAYOUT PHASE 4
7	3E	PROCESSING FACILITY BUILDING PLAN
8	3F	PROCESSING FACILITY SECTION VIEWS
9	3G	MISCELLANEOUS DETAILS
10	3H	EROSION CONTROL PLAN - NORTH FACILITY
11	3I	EROSION CONTROL PLAN - SOUTH FACILITY
12	3J	EROSION CONTROL NOTES AND DETAILS

STANDARD DRAWINGS
ODOT
ODOT TYPE CATCH BASIN 2-2A (MODIFIED)
ODOT TYPE HALF-HEIGHT HEADWALL 2-1
THE STANDARD CONSTRUCTION DRAWINGS LISTED ON THESE PLANS SHALL BE CONSIDERED A PART THEREOF.



LOCATION MAP

SCALE: 1"=2,000'

PREPARED BY:

CEC
Civil & Environmental
Consultants, Inc.
8740 ORION PLACE, SUITE 100
COLUMBUS, OHIO 43240

OCTOBER 2014
CEC PROJECT NO. 112-048

CEC
Civil & Environmental Consultants, Inc.
8740 Orion Place, Suite 100 - Columbus, OH 43240
Ph: 614.540.6633 · 888.598.6808 · Fax: 614.540.6638
www.cecinc.com

PHASED CONSTRUCTION SEQUENCE
& FACILITY MODIFICATIONS
ODNR CHIEF'S ORDER #2014-183
WEAVERTOWN TRANSPORT LEASING, INC.
WTL PROCESSING FACILITY

DRAWN BY: NAS CHECKED BY: RAS APPROVED BY: DRL
DATE: OCTOBER 2014 DWG SCALE: AS SHOWN PROJECT NO: 112-048
DRAWING NO: 1

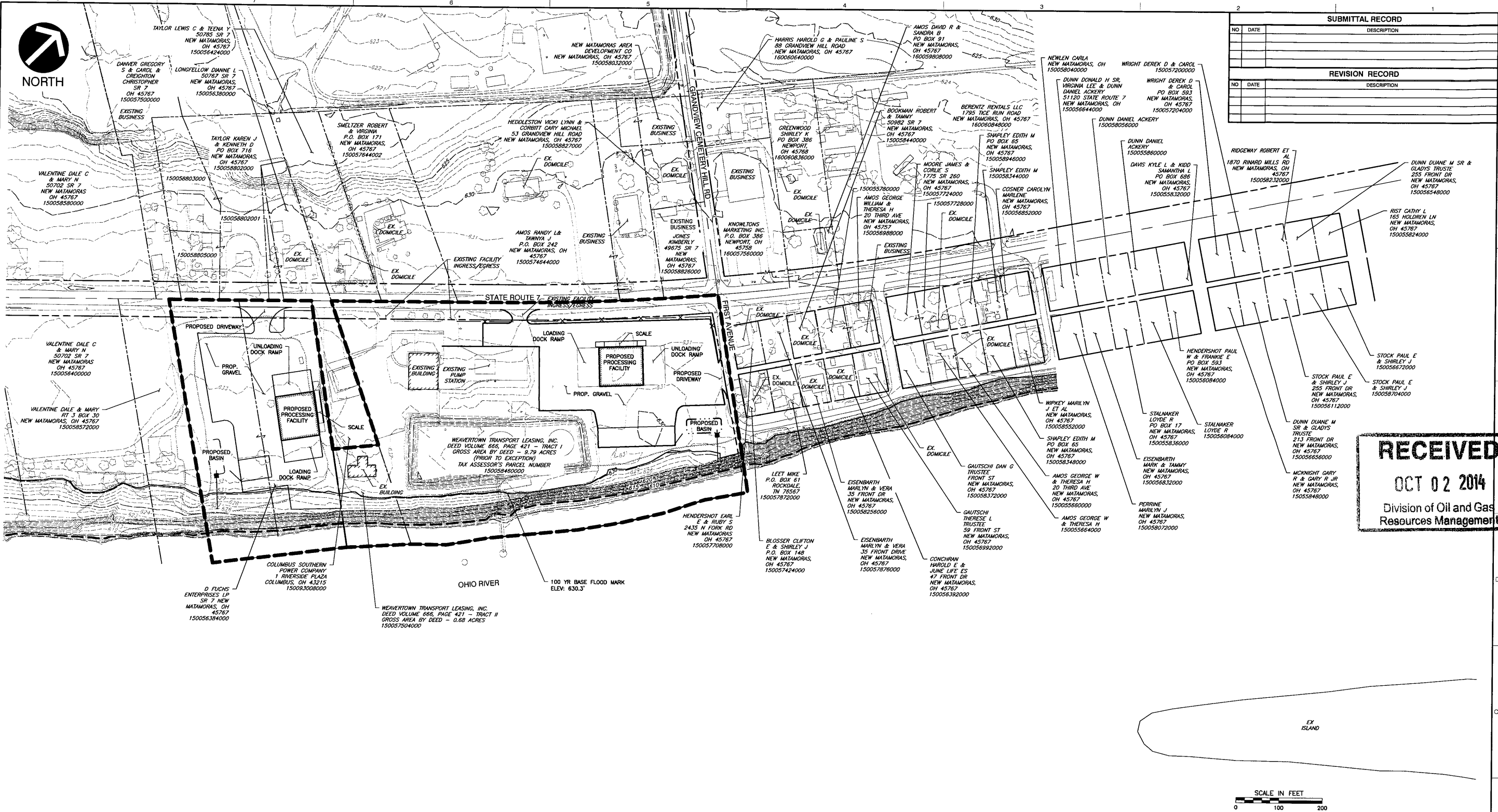
TITLE SHEET

SHEET 1 OF 12

REFERENCE
1. U.S.G.S TOPOGRAPHIC MAP, NEW MATAMORAS QUADRANGLE, OHIO & WEST VIRGINIA DATED: 1979.



SUBMITTAL RECORD	
NO	DATE
REVISION RECORD	
NO	DATE

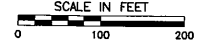


RECEIVED
OCT 02 2014
Division of Oil and Gas
Resources Management

- LEGEND:**
- EX. INDEX CONTOUR
 - EX. INTERMEDIATE CONTOUR
 - EX. SITE PROPERTY BOUNDARY
 - ORDINARY HIGH WATER MARK (ELEV. 607.9')
 - LETTER OF MAP AMENDMENT (LOMA) BOUNDARY
 - 100 YR BASE FLOOD MARK (ELEV. 630.3')
 - PROP. PHASE 1 & 2 FACILITY BOUNDARY

REFERENCES:

1. BASE MAP DEVELOPED FROM TOPOGRAPHIC MAPPING BY HENDERSON AERIAL SERVICES, INC. FROM PHOTOGRAPHY DATED 12/08/2011 AND ADDITIONAL TOPOGRAPHY SURVEY BY CIVIL & ENVIRONMENTAL CONSULTANTS, INC. COMPLETED ON 12/21/2011.



C&E
Civil & Environmental Consultants, Inc.
8740 Orion Place, Suite 100 - Columbus, OH 43240
Ph: 614.540.6633 - 888.588.6808 - Fax: 614.540.6638
www.cecinc.com

**PHASED CONSTRUCTION SEQUENCE
& FACILITY MODIFICATIONS**
ODNR CHIEF'S ORDER #2014-183
WEVERTOWN TRANSPORT LEASING, INC.
WTL PROCESSING FACILITY

DRAWN BY: NAS CHECKED BY: RAS APPROVED BY: DRL
DATE: OCTOBER 2014 DWG SCALE: AS SHOWN PROJECT NO: 112-048

SITE ENVIRONS

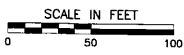
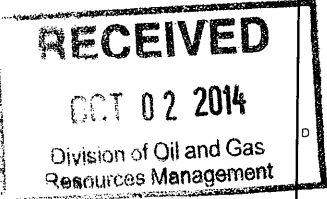
DRAWING NO: 2
SHEET 2 OF 12




SUBMITTAL RECORD		
NO	DATE	DESCRIPTION
REVISION RECORD		
NO	DATE	DESCRIPTION

- LEGEND:**
- EX. INDEX CONTOUR
 - EX. INTERMEDIATE CONTOUR
 - EX. SITE PROPERTY BOUNDARY
 - EX. SANITARY SERVICE
 - EX. WATERLINE SERVICE
 - EX. RIGHT-OF-WAY
 - EX. OVERHEAD WIRE
 - EX. UTILITY POLE
 - EX. LIGHT
 - EX. STORM SEWER
 - EX. STORM SEWER CATCH BASIN
 - EX. TREE
 - EX. FENCE
 - PROP. PHASE 1 & 2 FACILITY BOUNDARY
 - PROP. GRAVEL
 - PROP. GRAVEL WITH GEOMEMBRANE LINER
 - EX. ASPHALT

- NOTES:**
1. BASE MAP DEVELOPED FROM TOPOGRAPHIC MAPPING BY HENDERSON AERIAL SERVICES, INC. FROM PHOTOGRAPHY DATED 12/08/2011 AND ADDITIONAL TOPOGRAPHY SURVEY BY CIVIL & ENVIRONMENTAL CONSULTANTS, INC. COMPLETED ON 12/21/2011.
 2. EXISTING WATERLINE SERVICE AND SANITARY SERVICE ARE APPROXIMATE BASED ON FIGURE FROM THE VILLAGE OF NEW MATAMORAS DEPARTMENT OF WATER AND WASTEWATER RECEIVED ON 4/11/12, NOT FIELD VERIFIED.





Civil & Environmental Consultants, Inc.
8740 Orion Place, Suite 100 - Columbus, OH 43240
Ph: 614.540.6633 - 888.598.6808 - Fax: 614.540.6638
www.cecinc.com

**PHASED CONSTRUCTION SEQUENCE
& FACILITY MODIFICATIONS**
ODNR CHIEF'S ORDER #2014-183
WEVERTOWN TRANSPORT LEASING, INC.
WTL PROCESSING FACILITY

DRAWN BY:	NAS	CHECKED BY:	RAS	APPROVED BY:	DRL
DATE:	OCTOBER 2014	DWG SCALE:	AS SHOWN	PROJECT NO:	112-048

SITE LAYOUT - PHASE 1

3A

SHEET 3 OF 12

P:\2011\12-048-CESD\Eng\CDR-Application to Operate\112-048 - CDR - Figure 1-Phase 1-15107-2014 - mwp.dwg - 10/1/2014 10:04 AM



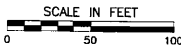
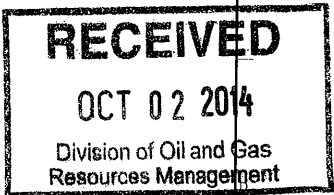
SUBMITTAL RECORD		
NO	DATE	DESCRIPTION
REVISION RECORD		
NO	DATE	DESCRIPTION

LEGEND:

- EX. INDEX CONTOUR
- EX. INTERMEDIATE CONTOUR
- EX. SITE PROPERTY BOUNDARY
- EX. SANITARY SERVICE
- EX. WATERLINE SERVICE
- EX. RIGHT-OF-WAY
- EX. OVERHEAD WIRE
- EX. UTILITY POLE
- EX. LIGHT
- EX. STORM SEWER
- EX. STORM SEWER CATCH BASIN
- EX. TREE
- EX. FENCE
- PROP. FACILITY BOUNDARY
- PROP. GRAVEL
- PROP. GRAVEL WITH GEOMEMBRANE LINER
- PROP. CONCRETE
- EX. ASPHALT

NOTES:

1. BASE MAP DEVELOPED FROM TOPOGRAPHIC MAPPING BY HENDERSON AERIAL SERVICES, INC. FROM PHOTOGRAPHY DATED 12/08/2011 AND ADDITIONAL TOPOGRAPHY SURVEY BY CIVIL & ENVIRONMENTAL CONSULTANTS, INC. COMPLETED ON 12/21/2011.
2. EXISTING WATERLINE SERVICE AND SANITARY SERVICE ARE APPROXIMATE BASED ON FIGURE FROM THE VILLAGE OF NEW MATAMORAS DEPARTMENT OF WATER AND WASTEWATER RECEIVED ON 4/11/12, NOT FIELD VERIFIED.



*HAND SIGNATURE ON FILE



Civil & Environmental Consultants, Inc.
8740 Orion Place, Suite 100 - Columbus, OH 43240
Ph: 614.540.6633 · 888.598.6808 · Fax: 614.540.6638
www.cecinc.com

PHASED CONSTRUCTION SEQUENCE
& FACILITY MODIFICATIONS
ODNR CHIEF'S ORDER #2014-183
WEVERTOWN TRANSPORT LEASING, INC.
WTL PROCESSING FACILITY

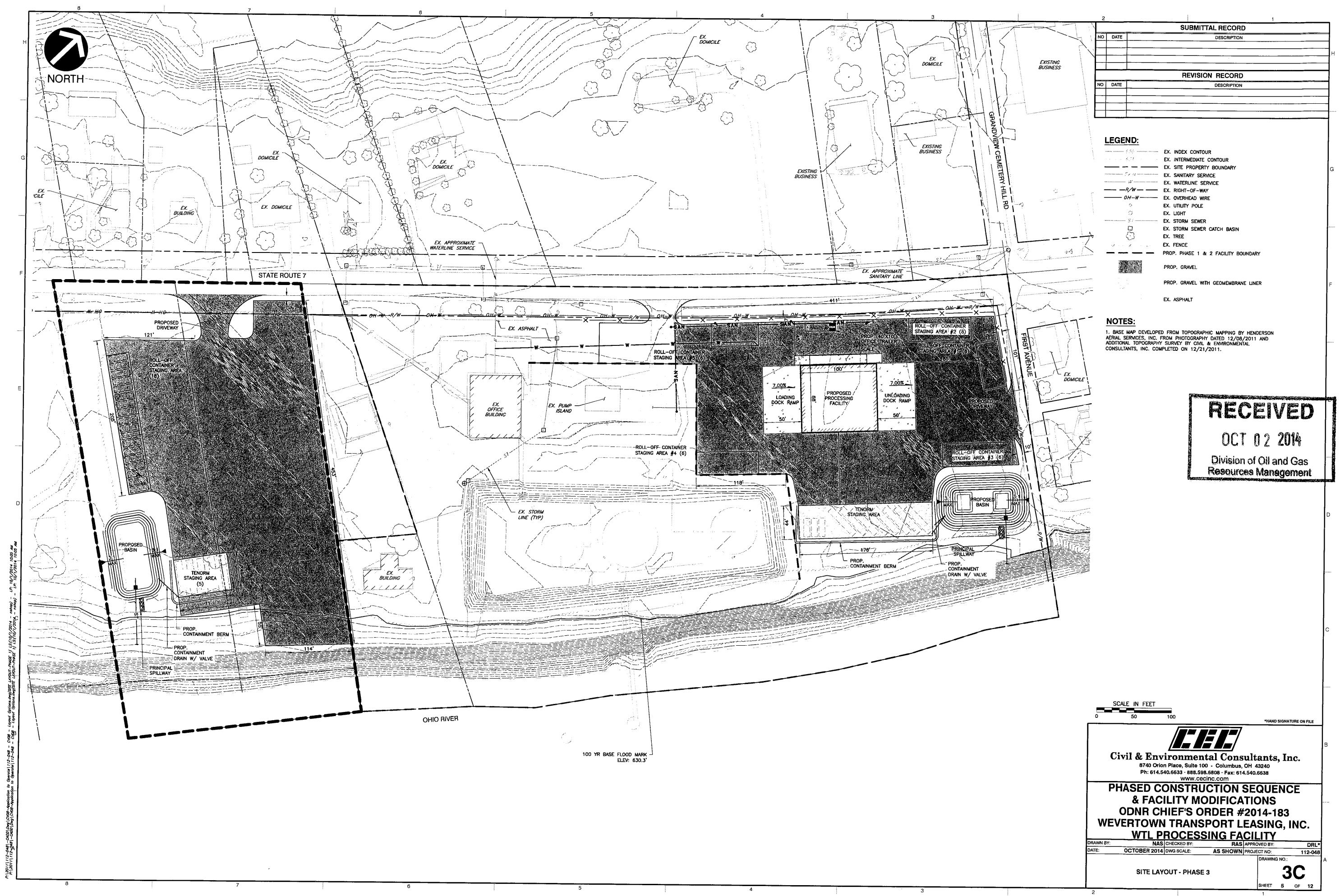
DRAWN BY: NAS CHECKED BY: RAS APPROVED BY: DRL*
DATE: OCTOBER 2014 DWG SCALE: AS SHOWN PROJECT NO.: 112-048

SITE LAYOUT - PHASE 2

3B

SHEET 4 OF 12

P:\2011\112-048 - CEC\DWG\SITE LAYOUT-PHASE 2\112-048.dwg - C:\OS - Figure\DWG\SITE LAYOUT-PHASE 2\112-048.dwg - LR 10/1/2014 10:04 AM



SUBMITTAL RECORD		
NO	DATE	DESCRIPTION
REVISION RECORD		
NO	DATE	DESCRIPTION

- LEGEND:**
- EX. INDEX CONTOUR
 - EX. INTERMEDIATE CONTOUR
 - EX. SITE PROPERTY BOUNDARY
 - EX. SANITARY SERVICE
 - EX. WATERLINE SERVICE
 - EX. RIGHT-OF-WAY
 - EX. OVERHEAD WIRE
 - EX. UTILITY POLE
 - EX. LIGHT
 - EX. STORM SEWER
 - EX. STORM SEWER CATCH BASIN
 - EX. TREE
 - EX. FENCE
 - PROP. PHASE 1 & 2 FACILITY BOUNDARY
 - PROP. GRAVEL
 - PROP. GRAVEL WITH GEOMEMBRANE LINER
 - EX. ASPHALT

NOTES:

1. BASE MAP DEVELOPED FROM TOPOGRAPHIC MAPPING BY HENDERSON AERIAL SERVICES, INC. FROM PHOTOGRAPHY DATED 12/08/2011 AND ADDITIONAL TOPOGRAPHY SURVEY BY CIVIL & ENVIRONMENTAL CONSULTANTS, INC. COMPLETED ON 12/21/2011.

RECEIVED
OCT 02 2014
Division of Oil and Gas
Resources Management

SCALE IN FEET
0 50 100

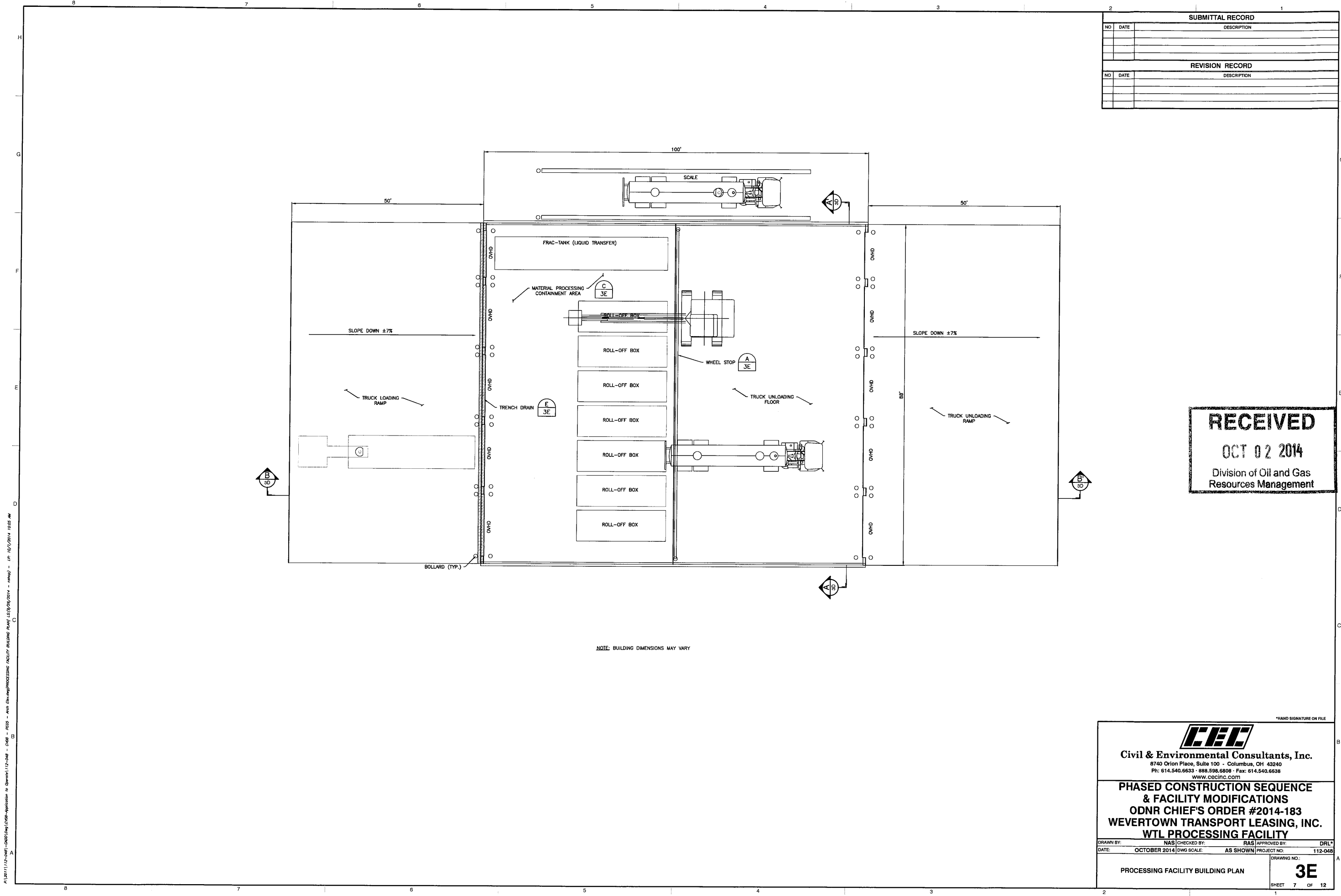
C&E
Civil & Environmental Consultants, Inc.
8740 Orion Place, Suite 100 - Columbus, OH 43240
Ph: 614.540.6633 - 888.598.6808 - Fax: 614.540.6638
www.ccecinc.com

**PHASED CONSTRUCTION SEQUENCE
& FACILITY MODIFICATIONS
ODNR CHIEF'S ORDER #2014-183
WEVERTOWN TRANSPORT LEASING, INC.
WTL PROCESSING FACILITY**

DRAWN BY: NAS CHECKED BY: RAS APPROVED BY: DRL
DATE: OCTOBER 2014 DWG SCALE: AS SHOWN PROJECT NO: 112-048

SHEET 5 OF 12

3C



SUBMITTAL RECORD		
NO	DATE	DESCRIPTION
REVISION RECORD		
NO	DATE	DESCRIPTION

RECEIVED
OCT 02 2014
Division of Oil and Gas
Resources Management

Civil & Environmental Consultants, Inc.
8740 Orion Place, Suite 100 - Columbus, OH 43240
Ph: 614.540.6633 • 888.598.6808 • Fax: 614.540.6638
www.cecinc.com

**PHASED CONSTRUCTION SEQUENCE
& FACILITY MODIFICATIONS**
ODNR CHIEF'S ORDER #2014-183
WEVERTOWN TRANSPORT LEASING, INC.
WTL PROCESSING FACILITY

DRAWN BY: NAS	CHECKED BY: RAS	APPROVED BY: DRL
DATE: OCTOBER 2014	DWG SCALE: AS SHOWN	PROJECT NO: 112-048

PROCESSING FACILITY BUILDING PLAN

3E

SHEET 7 OF 12

EROSION AND SEDIMENT CONTROL NOTES
MANAGEMENT STRATEGIES AND SEQUENCE OF EROSION
CONTROL MEASURES

UNLESS OTHERWISE INDICATED, ALL EROSION AND SEDIMENT CONTROL PRACTICES SHALL BE CONSTRUCTED AND MAINTAINED IN ACCORDANCE WITH THE REQUIREMENTS LISTED IN PART III OF THE NATIONAL POLLUTANT DISCHARGE ELIMINATION SYSTEM (NPDES) GENERAL PERMIT NO. OH000002 FOR STORM WATER DISCHARGES ASSOCIATED WITH CONSTRUCTION ACTIVITY AS REGULATED BY THE OHIO EPA (GENERAL PERMIT).

IN THE EVENT OF CONFLICT BETWEEN THESE REQUIREMENTS AND POLLUTION CONTROL LAWS, RULES OR REGULATIONS OF OTHER FEDERAL OR STATE OR LOCAL AGENCIES, THE MORE RESTRICTIVE LAWS, RULES OR REGULATIONS SHALL APPLY.

THE FOLLOWING SEQUENCE OF EVENTS AND EROSION CONTROL MEASURES SHALL BE INCORPORATED INTO THE CONSTRUCTION SCHEDULE FOR THIS PROJECT AND SHALL APPLY TO ALL CONSTRUCTION ACTIVITIES WITHIN PROJECT LIMITS:

1. TEMPORARY SEDIMENT TRAPS, SEDIMENT BARRIERS, AND EROSION CONTROL STONE ARE TO BE PLACED PRIOR TO CLEARING AND GRUBBING.
2. EROSION CONTROL MEASURES ARE TO BE INSTALLED AND MADE OPERATIONAL AT THE START OF CLEARING OPERATIONS, INCLUDING APPROVED SEDIMENT BASINS.
3. THE CONTRACTOR SHALL COMPLETE DRAINAGE FACILITIES WITHIN THIRTY (30) DAYS FOLLOWING COMPLETION OF ROUGH GRADING AT ANY POINT WITHIN THE PROJECT.
4. CONSTRUCTION WILL BE SEQUENCED SO THAT GRADING OPERATIONS CAN BEGIN AND END AS QUICKLY AS POSSIBLE.
5. AREAS WHICH ARE NOT TO BE DISTURBED WILL BE CLEARLY MARKED BY FENCING, FLAGS, SIGNS, ETC.
6. A. PERMANENT OR TEMPORARY SOIL STABILIZATION SHALL BE APPLIED TO DENuded AREAS WITHIN SEVEN (7) DAYS AFTER FINAL GRADE IS REACHED ON ANY PORTION OF THE SITE. TEMPORARY SOIL STABILIZATION SHALL BE APPLIED WITHIN SEVEN (7) DAYS TO DENuded AREAS THAT MAY NOT BE AT FINAL GRADE BUT WILL REMAIN DORMANT (UNDISTURBED) FOR LONGER THAN THIRTY (30) DAYS. PERMANENT STABILIZATION SHALL BE APPLIED TO AREAS THAT ARE TO BE LEFT DORMANT FOR MORE THAN ONE (1) YEAR.

B. DURING CONSTRUCTION OF THE PROJECT, SOIL STOCKPILES SHALL BE STABILIZED OR PROTECTED WITH SEDIMENT TRAPPING MEASURES. THE APPLICANT IS RESPONSIBLE FOR THE TEMPORARY PROTECTION AND PERMANENT STABILIZATION OF ALL SOIL STOCKPILES ON SITE AS WELL AS SOIL INTENTIONALLY TRANSPORTED FROM THE PROJECT SITE.

C. A PERMANENT VEGETATION COVER SHALL BE ESTABLISHED ON DENuded AREAS NOT OTHERWISE PERMANENTLY STABILIZED. PERMANENT VEGETATION SHALL NOT BE CONSIDERED ESTABLISHED UNTIL A GROUND COVER IS ACHIEVED THAT, IN THE OPINION OF THE LOCAL PROGRAM ADMINISTRATOR OR HIS DESIGNATED AGENT, IS UNIFORM, MATURE ENOUGH TO SURVIVE AND WILL INHIBIT EROSION. VEGETATIVE COVER SHALL BE ESTABLISHED AS FOLLOWS:

D. HYDRO SEEDING MAY BE USED IN PLACE OF MULCHING ON AREAS OTHER THAN DITCH BANKS. STABILIZATION MEASURES SHALL BE APPLIED TO EARTHEN STRUCTURES SUCH AS DAMS, DIVERSIONS, AND DITCHES OR WATERCOURSE BEDS AND BANKS IMMEDIATELY AFTER INSTALLATION.

E. THE LIMITS OF SEEDING AND MULCHING ARE AS SHOWN ON THE PLAN. SEEDING HAS BEEN ASSUMED TO A DISTANCE OF 5 FEET OUTSIDE THE LIMITS OF WORK. ALL AREAS NOT DESIGNATED TO BE SODDED SHALL REMAIN UNDER EXISTING GROUND COVER. THOSE AREAS DISTURBED OUTSIDE THE SEEDING LIMITS SHALL BE SEED AND MULCH AT THE CONTRACTOR'S EXPENSE.

7. A. ALL STORM SEWER INLETS THAT ARE MADE OPERABLE DURING CONSTRUCTION SHALL BE PROTECTED SO THAT SEDIMENT-LADEN WATER CANNOT ENTER THE CONVEYANCE SYSTEM WITHOUT FIRST BEING FILTERED OR OTHERWISE TREATED TO REMOVE SEDIMENT.

B. BEFORE NEWLY CONSTRUCTED CONVEYANCE CHANNELS ARE MADE OPERATIONAL, ADEQUATE OUTLET PROTECTION AND ANY REQUIRED TEMPORARY OR PERMANENT CHANNEL LINING SHALL BE INSTALLED IN BOTH THE CONVEYANCE CHANNEL AND RECEIVING CHANNEL.

8. A. CUT AND FILL SLOPES SHALL BE DESIGNED AND CONSTRUCTED IN A MANNER THAT WILL MINIMIZE EROSION. SLOPES THAT ARE FOUND TO BE ERODING EXCESSIVELY AS DETERMINED BY REGULATORY AGENCIES WITHIN ONE (1) YEAR OF PERMANENT STABILIZATION SHALL BE PROVIDED WITH ADDITIONAL SLOPE STABILIZING MEASURES UNTIL THE PROBLEM IS CORRECTED.

B. CONCENTRATED RUNOFF SHALL NOT FLOW DOWN CUT OR FILL SLOPES UNLESS CONTAINED WITHIN AN ADEQUATE TEMPORARY OR PERMANENT CHANNEL, FLUME, OR SLOPE DRAIN STRUCTURE.

9. PERIODIC INSPECTIONS AND REQUIRED MAINTENANCE MUST BE PROVIDED, ESPECIALLY AFTER EACH SIGNIFICANT STORM. THE PROJECT SUPERINTENDENT SHALL BE RESPONSIBLE FOR THE INSTALLATION AND MAINTENANCE OF ALL EROSION AND SEDIMENT CONTROL PRACTICES.

10. THE PLAN APPROVING AUTHORITY MUST BE NOTIFIED ONE (1) WEEK PRIOR TO THE PRECONSTRUCTION CONFERENCE, ONE (1) WEEK PRIOR TO THE COMMENCEMENT OF LAND DISTURBING ACTIVITY, AND ONE (1) WEEK PRIOR TO THE FINAL INSPECTION.

11. ALL TEMPORARY EROSION AND SEDIMENT CONTROL MEASURES SHALL BE REMOVED WITHIN THIRTY (30) DAYS AFTER FINAL SITE STABILIZATION OR AFTER THE TEMPORARY MEASURES ARE NO LONGER NEEDED, UNLESS OTHERWISE AUTHORIZED BY THE LOCAL PROGRAM ADMINISTRATOR. TRAPPED SEDIMENT AND DISTURBED SOIL AREAS RESULTING FROM THE DISPOSITION OF TEMPORARY MEASURES SHALL BE PERMANENTLY STABILIZED TO PREVENT FURTHER EROSION AND SEDIMENTATION.

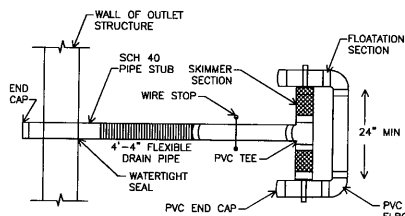
12. ALL STORM SEWER PIPES AND STRUCTURES ADJACENT TO THIS PROJECT SHALL BE CLEARED OF ALL DEBRIS AND ERODED MATERIAL UPON COMPLETION OF CONSTRUCTION.

DRAINAGE

1. THE CONTRACTOR SHALL MAINTAIN WORKING STORM DRAINAGE SYSTEMS THROUGHOUT THE WORK AREAS AT ALL TIMES DURING CONSTRUCTION. THE WORKING SYSTEM MAY CONSIST OF THE EXISTING STORM DRAINAGE SYSTEM, THE PROPOSED STORM DRAINAGE SYSTEM, OR A COMBINATION THEREOF. NO ADDITIONAL PAYMENT OR COMPENSATION WILL BE MADE FOR THIS WORK.
2. THE COST OF STRUCTURE EXCAVATION FOR WINGWALLS OR HEADWALLS IS TO BE INCLUDED IN THE UNIT BID PRICE.

BENCHMARKS

THE CONTRACTOR SHALL ATTEMPT TO HOLD BENCH MARK LOCATIONS THROUGHOUT THE LIFE OF THE PROJECT. IN THE EVENT THAT A BENCH MARK IS DISTURBED, THE CONTRACTOR WILL RELOCATE OR REESTABLISH THE BENCH MARK. NO ADDITIONAL PAYMENT OR COMPENSATION WILL BE MADE FOR THIS WORK.



1. ALL JOINTS OF THE FLOATATION SECTION SHALL BE GLUED TOGETHER AND WATER-TIGHT. JOINTS OF THE SKIMMER SECTION NEED NOT BE WATER-TIGHT.
2. TO INSTALL DEWATERING PIPE STUB: FOR CORRUGATED METAL RISER, STUB SHALL BE SCH 40 STEEL PIPE TACK WELDED TO CREATE A WATER-TIGHT SEAL. FOR CONCRETE RISER, STUB SHALL BE SCH 40 PVC PIPE GROUTED TO CREATE WATER-TIGHT SEAL.
3. FLEXIBLE, NON-PERFORATED HDPE DRAIN PIPE SHALL BE ATTACHED TO OUTLET STRUCTURE DEWATERING STUB WITH WATER-TIGHT SEAL.
4. ORIFICE TO BE SIZED FOR A MINIMUM 48-HOUR DEWATERING TIME.

MAINTENANCE

IN GENERAL, ALL EROSION AND SEDIMENTATION CONTROL MEASURES SHALL BE CHECKED AFTER EACH RAINFALL OR WEEKLY, WHICHEVER IS MOST FREQUENT, AND SHOULD BE CLEANED AND REPAIRED ACCORDING TO THE FOLLOWING SCHEDULE:

1. EROSION AND SEDIMENT CONTROL WILL BE CHECKED REGULARLY FOR UNDERMINING OR DETERIORATION AND BUILDUP OR CLOGGING WITH SEDIMENT. CORRECTIVE ACTION WILL BE TAKEN IMMEDIATELY.
2. ALL SEEDED AREAS WILL BE CHECKED REGULARLY TO SEE THAT A GOOD STAND OF GRASS IS ESTABLISHED AND MAINTAINED. AREAS SHOULD BE FERTILIZED AND RESEED AS NEEDED.
3. ALL TEMPORARY EROSION AND SEDIMENT MEASURES SHALL BE DISPOSED OF WITHIN THIRTY (30) DAYS AFTER FINAL SITE STABILIZATION IS ACHIEVED AND VEGETATION IS ESTABLISHED.
4. TEMPORARY MODIFICATIONS TO STORMWATER POND USED FOR SEDIMENT CONTROL DURING CONSTRUCTION:

A. THE SEDIMENT POND AND OUTLET STRUCTURE SHALL BE CONSTRUCTED AND ALL TEMPORARY SEDIMENT CONTROL MODIFICATIONS SHALL BE OPERATIONAL BEFORE UPSLOPE LAND DISTURBANCE BEGINS.

B. THE SEDIMENT POND SHALL BE STABILIZED IMMEDIATELY FOLLOWING ITS CONSTRUCTION. IN NO CASE SHALL THE EMBANKMENT OR EMERGENCY SPILLWAY REMAIN BARE FOR MORE THAN 7 DAYS.

C. DURING SITE CONSTRUCTION, SEDIMENT SHALL BE REMOVED WHEN THE SEDIMENT HAS FILLED ONE-HALF THE POND'S ORIGINAL DEPTH.

D. TEMPORARY STRUCTURES OR MODIFICATIONS USED FOR SEDIMENT CONTROL DURING CONSTRUCTION SHALL BE REMOVED ONLY AFTER THE UPSTREAM DRAINAGE AREA IS STABILIZED. DEWATERING OR REMOVAL SHALL NOT CAUSE SEDIMENT TO BE DISCHARGED.

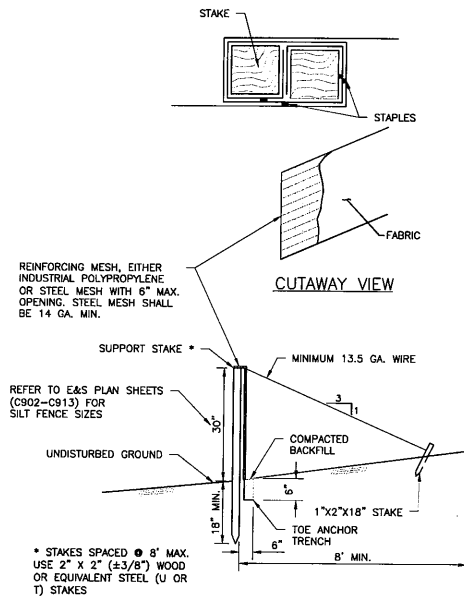
E. UPON FINAL USE OF THE SEDIMENT POND, SEDIMENT SHALL BE REMOVED AS NEEDED TO ACHIEVE THE DESIGN DEPTH AND DIMENSIONS OF THE PERMANENT POND.

WATER QUALITY

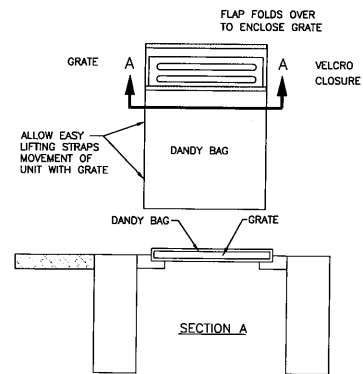
THE CONTRACTORS WILL BE RESPONSIBLE FOR WATER QUALITY THROUGHOUT THE DURATION OF CONSTRUCTION. THE ENVIRONMENTAL MONITOR AND/OR PROJECT ENGINEER WILL WORK CLOSELY WITH THE PROJECT SUPERVISOR. THE CONTRACTOR WILL BE RESPONSIBLE FOR THE FOLLOWING:

1. IMPLEMENTING THE EROSION AND SEDIMENT CONTROL PLAN.
2. DIRECTING THE CONSTRUCTION, OPERATION, AND DISMANTLING OF TEMPORARY EROSION CONTROL FEATURES.
3. IMPLEMENTING REMEDIAL ACTION REQUIRED TO REPAIR FAILING EROSION AND SEDIMENTATION CONTROL FEATURES.
4. IMPLEMENTING STORM AND WINTER SHUTDOWN PROCEDURES.
5. SHAPE EARTHWORK PRIOR TO THE SUSPENSION OF GRADING OPERATIONS EACH DAY IN A MANNER THAT WILL PERMIT STORM RUNOFF WHILE MINIMIZING EROSION.
6. EROSION CONTROL FEATURES INSTALLED BY THE CONTRACTOR WILL BE OPERATED AND MAINTAINED IN AN ACCEPTABLE CONDITION.
7. WHEN ANY EROSION OR SEDIMENT CONTROL FEATURE HAS REACHED HALF OF ITS CAPACITY, THE DEVICE IS TO BE CLEANED OUT AND RESTORED TO ITS ORIGINAL CONDITION.

THE CONTRACTOR WILL BE REQUIRED TO PREPARE A SPILL PREVENTION, CONTROL, AND COUNTERMEASURES (SPPC) PLAN THAT ITEMIZES SPECIFIC MEASURES THAT WILL BE IMPLEMENTED TO PREVENT AND CLEAN UP CHEMICAL AND PETROLEUM PRODUCT SPILLS THAT MAY OCCUR DURING ALL PHASES OF PROJECT CONSTRUCTION. FUEL STORAGE AND REFUELING ACTIVITIES, EQUIPMENT MAINTENANCE ACTIVITIES, AND EQUIPMENT WASHING WILL BE KEPT AT LEAST 500 FEET AWAY FROM ANY PERENNIAL OR INTERMITTENT WATERCOURSE OR WETLAND.



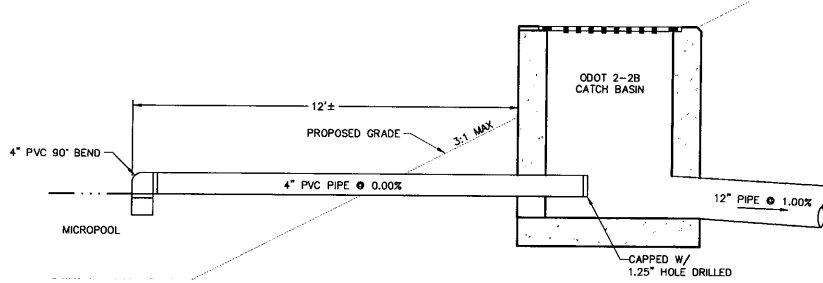
SILT FENCE DETAIL
NOT TO SCALE



INSTALLATION: STAND GRATE ON END. PLACE DANDY BAG OVER GRATE. ROLL GRATE OVER SO THAT OPEN END IS UP. PULL UP SLACK. TUCK FLAP IN. PRESS VELCRO STRIPS TOGETHER. BE SURE END OF GRATE IS COMPLETELY COVERED BY FLAP OR DANDY BAG WILL NOT WORK PROPERLY. HOLDING HANDLES. CAREFULLY PLACE DANDY BAG WITH GRATE INSERTED INTO CATCH BASIN FRAME.

MAINTENANCE: WITH A STIFF BRISTLE BROOM OR SQUARE POINT SHOVEL REMOVE SILT AND OTHER DEBRIS OFF SURFACE AFTER EACH EVENT. REMOVE FINE MATERIAL FROM INSIDE ENVELOPE AS NEEDED.

DANDY BAG DETAIL
NOT TO SCALE



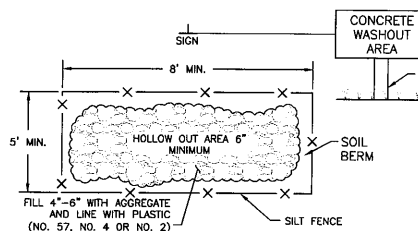
PERMANENT DETENTION BASIN OUTLET DETAIL
NOT TO SCALE

SUBMITTAL RECORD		
NO.	DATE	DESCRIPTION
REVISION RECORD		
NO.	DATE	DESCRIPTION

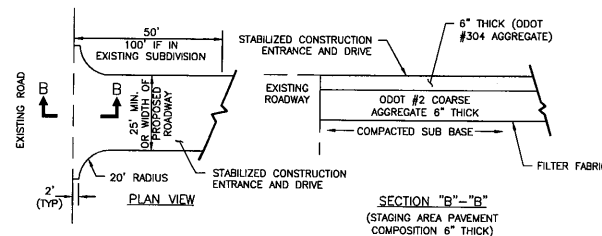
RECEIVED

OCT 02 2014

Division of Oil and Gas
Resources Management



CONCRETE WASHOUT AREA DETAIL
NOT TO SCALE



STABILIZED CONSTRUCTION ENTRANCE DETAIL
NOT TO SCALE

CEC
Civil & Environmental Consultants, Inc.
8740 Orion Place, Suite 100 - Columbus, OH 43240
Ph: 614.540.6633 · 888.598.6808 · Fax: 614.540.6638
www.cecinc.com

**PHASED CONSTRUCTION SEQUENCE
& FACILITY MODIFICATIONS**
ODNR CHIEF'S ORDER #2014-183
WEVERTOWN TRANSPORT LEASING, INC.
WTL PROCESSING FACILITY

DRAWN BY: NAS CHECKED BY: RAS APPROVED BY: DRL
DATE: OCTOBER 2014 DWG SCALE: AS SHOWN PROJECT NO: 112-048

EROSION CONTROL NOTES AND DETAILS

3J

SHEET 12 OF 12